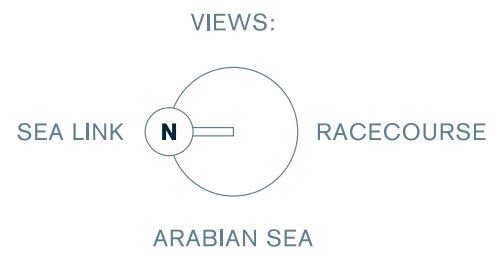
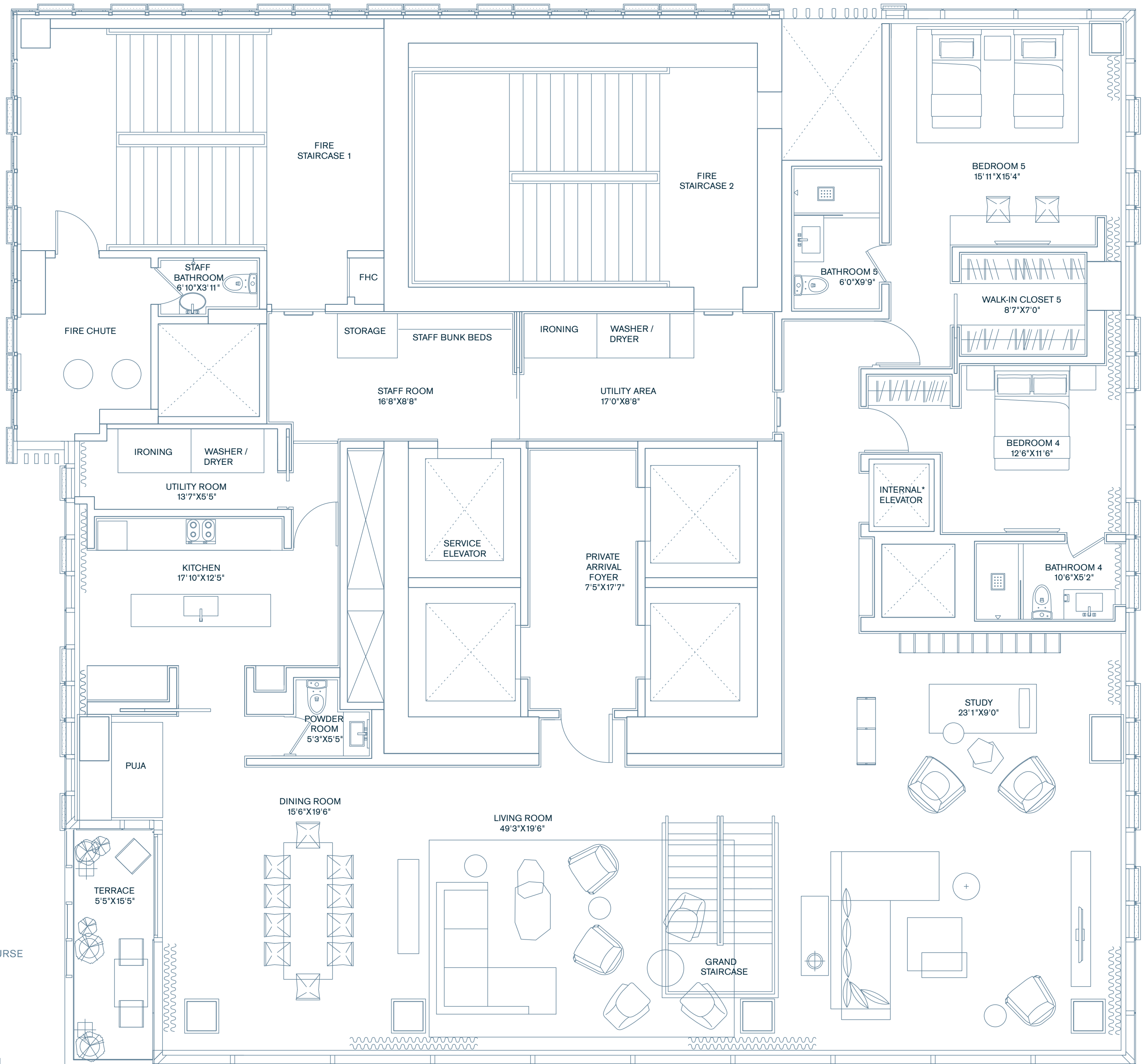


THE PENTHOUSE

Features

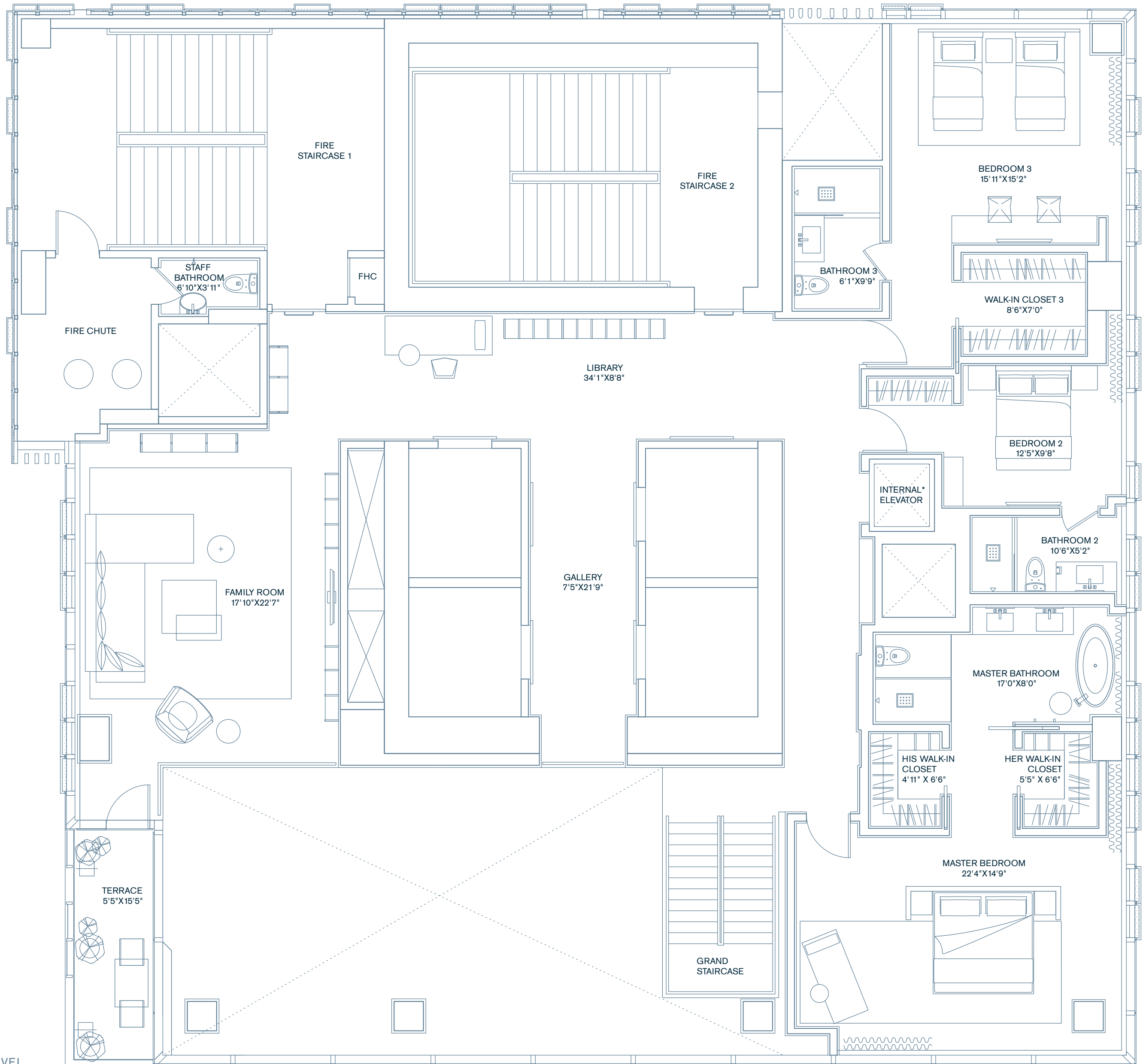
- Designer interior fit outs by Yabu Pushelberg
- Duplex spanning two entire floors
- 3 high-speed Resident elevators with keyed access onto a private foyer
- High performance floor to ceiling uninterrupted glass wall spanning 80 ft. across the living room, dining room and library with 180 degree views of the Arabian Sea and Mahalaxmi Racecourse
- Open terrace on both levels, ideal for idyllic evenings under the stars
- Opulent, double heighted (24 ft.) living and dining room extending across over 1600 sq. ft. with uninterrupted sea views
- Access to a sprawling (800 sq. ft.) Garden Terrace overlooking the Mahalaxmi Racecourse
- 11 ft. high clear ceiling throughout
- 5 spacious bedroom suites with en-suite bathrooms with the option of adding a 6th bedroom (a second master bedroom suite* on the main level; ideal for multi generational living)
- The oversized master bedroom covers a staggering area of approximately 650 sq.ft. with corner exposures featuring stunning views of the Sea and the Racecourse with the spectacular South Mumbai skyline as a backdrop
- His and her walk-in wardrobes with ample storage space and a 5 fixture marble clad en suite master bathroom
- Spacious secondary bedrooms with a walk-in wardrobe in the third bedroom
- Living & family rooms located on both levels
- Puja room on the main level
- Guest powder room on the main level
- Choice between a library, study, wine rack, humidior on both levels
- State of the art kitchen with a display island and floor to ceiling windows
- Premium fixtures and fittings
- Choice of light and dark colour palettes; superior hardwood and Italian marble
- Provision for substantial storage space
- Integrated home automation system
- Service elevator with direct access to back of house and staff quarters
- Vastu compliant
- Highest fire, life & safety standards in place
- State of the art air conditioning system
- Grand staircase connecting both levels
- Optional private elevator* within the Duplex

*At an additional cost



THE PENTHOUSE | MAIN LEVEL

* OPTIONAL





FOUR SEASONS
PRIVATE RESIDENCES

Mumbai

A PROVENANCE LAND DEVELOPMENT

+91 22 2481 6000

info@mumbaioresidences.com

www.mumbaioresidences.com

All rights reserved. The project is indicative of the kind of development that is proposed. Artist's impressions are used to illustrate products and features. Furnishings, fixtures, fittings, etc., if any, are shown for reference only. Provenance Land reserves the right to alter, amend and vary the layout, plans specifications or features subject to the approval of the authorities, without prior notice or obligation. Four Seasons Private Residences, Mumbai are not owned, developed or sold by Four Seasons Hotels Limited or its affiliates (Four Seasons). Provenance Land, the developer, uses the Four Seasons trademarks and trade names under a license from Four Seasons Hotels and Resorts Asia Pacific Pte. Ltd. The marks "FOUR SEASONS", "FOUR SEASONS HOTELS AND RESORTS", any combination thereof and the Tree Design are registered trademarks of Four Seasons Limited in Canada and U.S.A. and of Four Seasons Hotels (Barbados) Ltd. elsewhere. Prices, sizes and specifications are subject to change without notice. E. & O. E. Photographs and illustrations are representational. Disclaimer: Facilities/layouts/specification/information/images/brand name contained or mentioned herein are indicative and subject to change as maybe required by the authorities/developers and cannot form part of any offer or contract.

The project has been registered via MahaRERA registration number: REA51900007475 and is available on the website <https://maharera.mahaonline.gov.in> under registered projects.